



TWYFORD IN BLOOM ~JULY 2023~

WELCOME TO TWYFORD

Our aim is to demonstrate community spirit and highlight some of the works that have been, or are being, carried out. Particularly showcasing work of the Twyford in Bloom Working Group who bring together groups of volunteers, local organisations, clubs and societies, schools and businesses who work throughout the year to make Twyford a better place through their shared passion for improving and enhancing Twyford village.

THE TOUR

Starting point of the tour:
Bridge House
64 High Street
Twyford
READING
Berkshire
RG10 9AQ

Parking is available within the grounds of Bridge House.

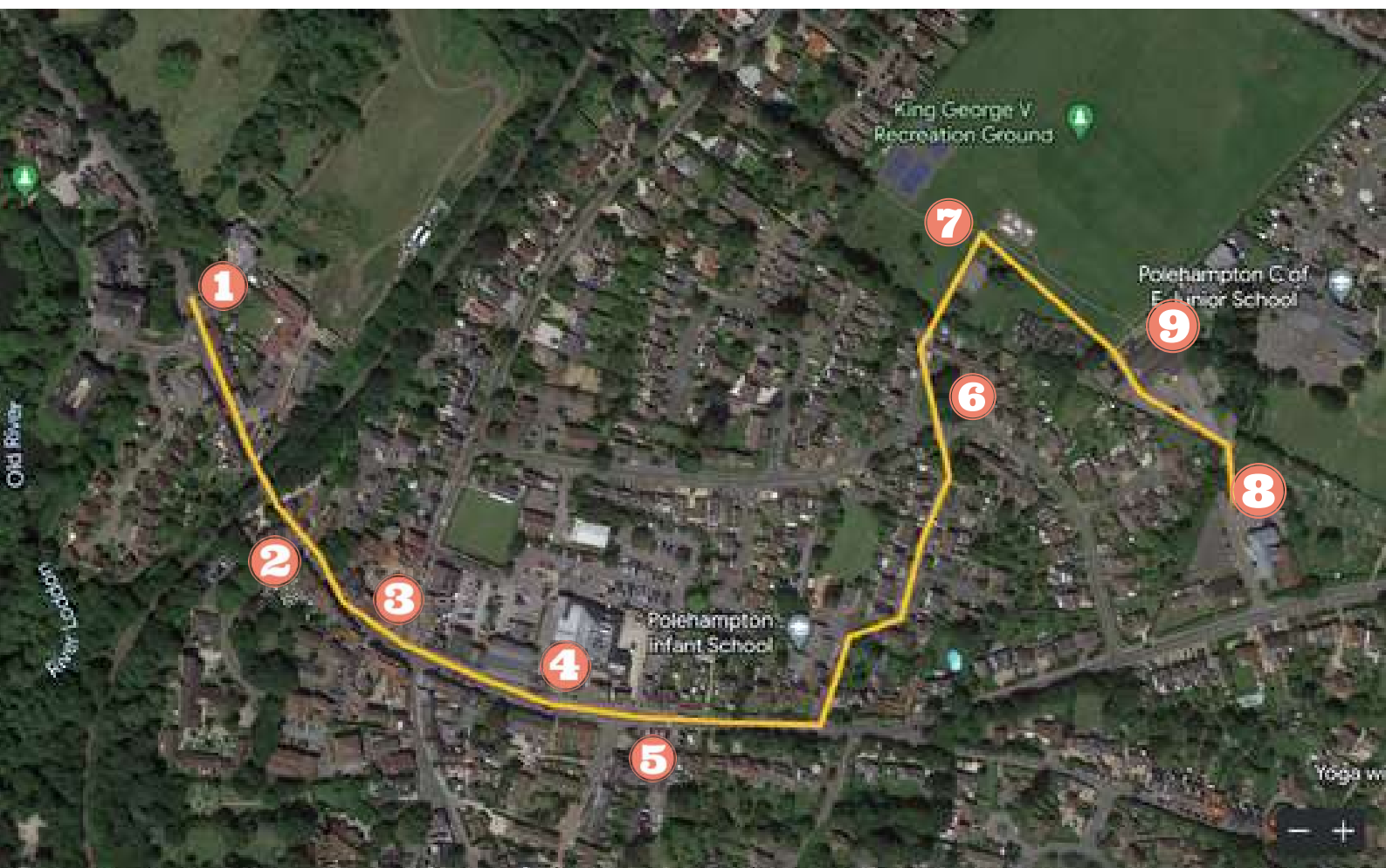


Twyford
PARISH COUNCIL



TWYFORD IN BLOOM ~JULY 2023~

THE TOUR



Twyford
PARISH COUNCIL



TWYFORD IN BLOOM ~JULY 2023~

POINTS OF INTEREST

1 - Wildflowers

Twyford has several wildflower areas in which a variety of methods are being used to create pollinator friendly areas. The areas are manually weeded and resown annually. This year, volunteers had additional support from a Duke of Edinburgh student. In addition to the self seeded plants, the seeds used are a mix of pollinator annuals, native annuals, and perennials, with supplementary plants added (the displays include Dill, Borage, China Aster, Sunflower, Strawflower, Sweet Alyssum, Draft Lupin, Gloriosa Daisy, Field Scabious, Birds Foot Trefoil, Greater Knapweed, Musk Mallow, Wild Carrot and Yellow Rattle), that are beneficial to a range of pollinators.



2 - Cuincy Garden & The Old Boys School



Twyford has been twinned with a village in France called Cuincy (pronounced Kwansee) since 2018 and following the celebrations, plants were provided by Cuincy and the Cuincy Garden was created. The idea of being twinned with a town or village in another country is to foster friendship and understanding and to promote cultural, sporting, and professional links between our citizens and this has certainly been demonstrated over the years through various visit, the most recent being last weekend for the Cuincy Tour Football Tournament which saw Twyford Comets U12/13s play against AS Cuincy.

The Old Boys School (listed building) is to be converted to become permanent home to Twyford Library.



Twyford
PARISH COUNCIL

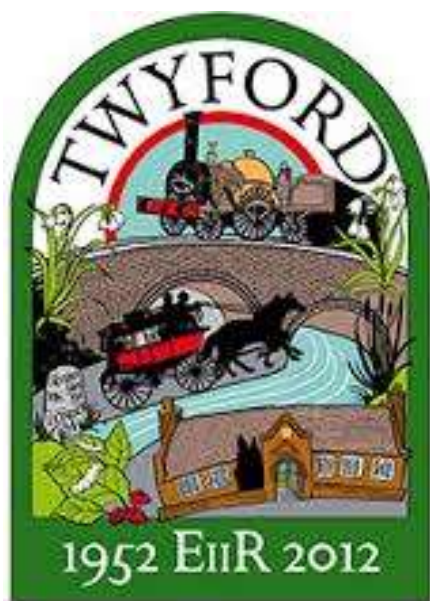
TWYFORD IN BLOOM ~JULY 2023~

POINTS OF INTEREST

3 - Bell Corner

Bell Corner takes its name from the adjacent listed building which was formerly The Bell public house. The first official reference to The Bell dates from 1624 when it was listed as having its own brewhouse. The Bell thrived due to the increase of traffic along the London to Bath Road and by the 1830s, The Bell had stabling for 40 horses and a three-acre farm. However, the arrival of Brunel's Railway in 1838 signalled the start of closures for coaching inns and in 1987 The Bell closed its doors. Since then, this area has housed Twyford's Fire Engine until the late 1980s when the shops and flats you see today were built.

This area is also home to the Twyford village sign created by local artist Sally Castle and in 2020, the additional plaque celebrating the twinning with Cuincy was added.



The sign illustrates icons from Twyford's history. The River Loddon, with its lilies, is crossed by a coach at one of the Bath Road fords and on a viaduct an early Great Western Railway locomotive. The mulberry leaves recall the old silk mill and the Almshouses can still be seen on London Road.



Twyford
PARISH COUNCIL



TWYFORD IN BLOOM ~JULY 2023~

POINTS OF INTEREST CONT...

4 - Wellington Square

The newest of the trio of trees, a Flowering Cherry has been planted to mark the 300th anniversary of The Polehampton Charity. This and some other trees within the parish are being trialled with tree irrigation bags. The drip bag requires refilling just once every week and takes 75 litres of water and slowly and continuously waters over a 5-to-9-hour period. Studies show that trees with irrigation bags have better growth than those that have been surface watered. Keeping our trees watered especially during the warm weather is hard work and we are incredibly grateful to our volunteer group who meet regularly to carry out the watering and in this instance to the local businesses.

We are also proud to be working with My Journey Wokingham who after successful application for funding from Defra have been able to install two deluxe bike repair stands and pumps within Twyford.

5 - Jubilee Corner

Twyford Allotments Tenants' Association (TATA) was formed in August 2016 and is affiliated with the National Allotment Society, which supports the needs of allotment holders across the UK. They seek to:

- Promote and raise awareness of the allotments.
- Work towards ensuring these special lands are preserved for future generations.
- Represent allotment holders in Twyford.
- Act as a forum to bring allotment holders together.
- Support allotment holders in any way necessary.
- Ensure that the sites are maintained satisfactorily.

Twyford is also lucky to have some of the garden areas managed by volunteers. These areas include:

- Jubilee Corner.
- Bell Corner.
- Polehampton Corner.
- Millennium Garden.
- Stanlake planter.



Twyford
PARISH COUNCIL



TWYFORD IN BLOOM ~JULY 2023~

POINTS OF INTEREST CONT...

6 - Hermitage Drive - Wildflowers

A natural wildflower area requested by residents and supported by Wokingham Borough Council.



7 - Coronation Labyrinth



A Twyford in Bloom project supported by Twyford Together was created in April and is hoped to captivate interest as people wind their way through the unique pattern. The labyrinth will develop over the coming seasons and the standing stone centerpiece which is Welsh Sandstone has been sourced from Llangorse Quarry and is guaranteed to be at least 450 million years old.

The labyrinth was created by David Goff Eveleigh, Wales' foremost fire and elemental theatre artist who has a keen interest in labyrinths, their design, symbolism, and ancient roots. One of David's most renowned maze's is the Penpont Green Man Millennium Maze which was commissioned by Gavin and Davina Hogg for their family estate.

Labyrinth's can be traced back over 4000 years and unlike a maze, a labyrinth is a single path that can be used for personal, psychological, and spiritual transformation. We invite you to walk the path to the center stone and see where your journey takes you!



Twyford
PARISH COUNCIL



TWYFORD IN BLOOM ~JULY 2023~

POINTS OF INTEREST CONT...

8 - Twyford & Ruscombe Horticultural Association

Twyford & Ruscombe Horticultural Association was formed in 1956. The Association is affiliated with the Royal Horticultural Society and is a 'not for profit' organisation run by volunteers.

The main objective is to promote gardening and allotment cultivation to members of all ages within the local community. This is achieved by publishing a monthly newsletter, arranging day trips to amazing gardens in the region, organising three horticultural shows a year and selling great garden products at fair prices at the Store in Loddon Hall Road. The Store is open on Sunday mornings between February and November.



9 - Loddon Hall

A chance to look at displays and join members from the tour for a cream tea.



Twyford
PARISH COUNCIL



TWYFORD IN BLOOM ~JULY 2023~

CALENDAR OF EVENTS 2022-2023

AUGUST

*-Twyford Village
Fete, Classic Car
show & Dog Show*

SEPTEMBER

-TRHA Autumn Show

OCTOBER

*-Volunteers sowed Yellow
Rattle seed*

NOVEMBER

*-Volunteers planted trees
and made new beds planted
with bulbs donated by
Dobbies garden centre*

DECEMBER

-Christmas fayre



Twyford
PARISH COUNCIL



TWYFORD IN BLOOM ~JULY 2023~

CALENDAR OF EVENTS CONT...

January

~ 3 new trees (2 Hornbeam and 1 Flowering Cherry) were planted to commemorate Polehampton Charities 300th anniversary.

FEBRUARY

~ Volunteers sowed Yellow Rattle and planted Snowdrops in the green. They also pruned the fruit trees.

MARCH

~ Annual village litter pick

April

~ JRHA Quiz & Annual Parish Meeting with community groups joining to promote their group.



Twyford
PARISH COUNCIL



TWYFORD IN BLOOM ~JULY 2023~

CALENDAR OF EVENTS



~ Coronation celebrations - a live screening of the Coronation, childrens film and band & Colour run. Also, Coronation mugs were given out at the primary schools.



*~ Bring and Buy plant sale
JRHA Summer show
Trip to Shaw House Newbury*



*~ Trip to RHS Wisley &
Hampton Court Palace
Cuincy football visit*



Twyford
PARISH COUNCIL



TWYFORD IN BLOOM ~JULY 2023~

PROJECTS CONTINUING THROUGHOUT 2023

Bridge Copse

The aim of the project is to restore a small strip of woodland in the Twyford Conservation Area, to open a view of the water meadows beyond, and provide habitat linkage with the neighbouring Loddon Nature Reserve.

There have been two volunteer work sessions by CROW and a third is scheduled for the 19th July. The invasive laurel has been successfully killed off and with the increased amount of light there has been new vigorous growth of native tree species - Hazel, Ash, Elder and Hawthorn. The ground flora has been flourishing with Celandines, and Hedge Garlic. All the accumulated litter has been removed and next week's session will remove the remaining light sucking evergreen understorey vegetation up to the riverbank.

Wildflower areas

The addition of Yellow Rattle as suggested by the 2022 judges



Twyford
PARISH COUNCIL



TWYFORD IN BLOOM ~JULY 2023~

PROJECTS CONTINUING THROUGHOUT 2023

Polehampton School Secret Garden

The Secret Garden, sited on the old caretaker's land was given over to the children at Polehampton Junior School in 2022 to start using during lesson times as an extra educational facility.

This spring and summer over 30 children have been having regular sessions in the garden. The main emphasis of these sessions being on growing confidence, teaching skills, and gaining independence.

The Children have been learning how to sow seeds, care for the plants and of course eating them too! At the moment it isn't available to all students, but it is hoped that with time for the lessons in the garden to increase and make it available to as many as possible.

Local growing groups such as TATA & TRHA have been a great help providing canes, strawberry plants, and seed potatoes for the children to learn to look after a space of their own.

Children have watched as their seedlings have grown bigger with all of them taking home at least one to continue on growing at home. We are hoping to foster a love of nature with children who participate as many of our lessons include learning about insects and birds that use the garden.

Children have enjoyed working in the garden, getting muddy and growing flowers and vegetables in the process. Many are amazed when they return after a few weeks away and their seedlings are now huge plants.



Twyford
PARISH COUNCIL



TWYFORD IN BLOOM ~JULY 2023~

PROJECTS CONTINUING THROUGHOUT 2023

Pond Mapping

Twyford Parish Council are supporting a local resident with his initiative to map ponds, wildflower areas and woodland within Twyford to help showcase all the good work being done to help insects and wildlife. It will also help to identify where there is currently a lack of wildlife friendly features. The hope is that this might inspire people to create new features or to support existing initiatives.

Stanlake Copse and care for the trees

Stanlake Copse is a diverse and ecologically valuable local natural habitat. The volunteer group meet on a monthly basis working on projects to enhance the copse's biodiversity and promote the growth of wildflowers, support wildlife, and improve people's access to enjoy and benefit from the natural environment.



Twyford
PARISH COUNCIL



TWYFORD IN BLOOM ~JULY 2023~

PROJECTS CONTINUING THROUGHOUT 2023

Stanlake Copse and care for the trees cont...



There is an ongoing assessment of the woodland to identify invasive species infestation, and to identify and promote the native species.

The assessment is driving the habitat restoration plan that focuses on removing invasive species and reintroducing and promoting native fauna and flora.

In order to protect and enhance existing wildlife habitat areas, nettles and brambles are cleared, the tree canopy along the edge of the woodland has been raised to allow more light to the woodland floor and promote woodland edge flower species. The trimming from such work is used to create more habitat in the log pile used to form deadwood hedge along the copse edge.

The pond is another habitat that is being developed to attract a diverse variety of wildlife and native plants.

The wildflower populations of Bluebells, Acconites, Wild Garlic, Cuckoo Flower and Cowslips, have been added to with the planting of Flag Iris and Bugleweed in and around the pond, the planting of Snowdrop bulbs, and the sowing of mixed woodland edge wildflower seeds under the raised canopy along the edge of the copse.

The paths around and through the copse have been laid with bark chippings to improve people's access. The overhanging branches and encroaching ground plants are pruned back each month to keep access open.



Twyford
PARISH COUNCIL



TWYFORD IN BLOOM ~JULY 2023~

PROJECTS CONTINUING THROUGHOUT 2023 CONT...

Twyford Growers



Twyford Growers is a weekly allotment group for people with feelings of anxiety, depression and/or loneliness. It has been set up by a group of Councillors, professionals, and enthusiastic individuals, and headed up by Twyford Parish Council with the support of and working with Age UK Berkshire, Involve, Ruscombe Parish Council and local NHS Social Prescribers.

Twyford Station Planters

Maintenance of the planters continue. Thanks is given to Dobbies Garden Centre (Hare Hatch) for supplying the plants.

Living lampposts, planter and hanging baskets

Management of the Living Lampposts is through the David Brownlow Charitable Foundation.

The Bell Corner Planter & Hanging Baskets are maintained by Window Flowers. Funding is provided by Twyford Parish Council, residents, businesses and organisations to enable year-round colour in Twyford.



Twyford
PARISH COUNCIL



TWYFORD IN BLOOM ~JULY 2023~

NEW FOR 2023

Cost of living help for residents

Twyford and Ruscombe Parish Councils continue to work together to support and offer guidance to residents during the cost of living crisis in the UK.

The hope is to support as many of residents as possible across key areas such as warm places, financial support and advice, food banks, mental health support, support for those in retirement, and local grants for educational costs and hardship.

A leaflet was sent to every household providing information and contact details of organisations that can provide the relevant advice and support.



Are you concerned about the rise in the cost of living?

Twyford and Ruscombe Parish Councils are working together to support and offer guidance to our residents during the cost of living crisis in the UK.

We want to support as many of our residents as possible across the key areas outlined in this leaflet. Please find contact details below of organisations that can provide advice and support.

WARM PLACES

We are working with Wokingham Borough Council and our local community to create a network of warm spaces. Spaces will be available for people to use and visit during the winter period and beyond.

Warm Spaces are inclusive and non-judgemental, heated and free to access.

The facilities at each warm space will vary but will offer opportunities to participate in activities and we hope to learn new skills. We are working with the local community so that these spaces will provide hot drinks, internet access, charging points and need instantly a friendly warm space to relax and connect with others within our community.

Scan to go to our Community Hub



For more information visit:
www.twyford-parish-council.gov.uk
www.wokingham.gov.uk/cost-of-living-help-and-support
Or call: 0118 974 8900

Financial Advice and Support

If you are worried about money, housing or employment, you can contact Citizens Advice.

They can give you free advice on debt, benefits, employment and housing issues. They will also make sure you are getting all the support you are entitled to.

For more information visit:
www.adviceuk.org.uk/what-we-do
Or call: 0800 278 7958

Food Banks

You may be facing the price of food in the supermarket going up.

Wokingham foodbanks know that crisis can strike anyone and they understand how difficult it can be to think about walking through a foodbank door.

Their volunteers aim to welcome everyone who visits their foodbanks with compassion, kindness and a listening ear.

For more information visit:
www.wokingham.foodbank.org.uk
Or call: 07928 524605

Mental Health Support

There are many things that can affect your mental health, particularly if you are dealing with financial problems or are living alone. It's normal and there is help available.

You are not alone. Don't be afraid to reach out for help if you're worried about yourself or a loved one.

If you need immediate mental health support call the Samaritans on 116 123
Or visit www.samaritans.org

Support for those in retirement

Age UK Berkshire

Age UK Berkshire provide expert advice, information and support on a wide variety of topics of interest or concern to people aged 50 or older in Berkshire. Age UK Berkshire also assists the families, friends and carers of those aged 50 or older.

For more information visit:
www.ageuk.org.uk/berkshire
Or call: 0118 9504242

Age Concern Twyford

Age Concern Twyford is a registered charity for whom aim is to assist elderly residents in the area to maintain their independence and quality of life. They help the local villages of Twyford, Hurst, Wargrave, Sparrow, Ruscombe and Chazeau.

For more information visit:
www.ageconcern.org.uk
Or call: 0118 9340400

Local Grants for Educational Costs and Hardship

The local grant is a charity provided relief for people in need, those experiencing hardship or distress and provides the education of people under 25 who reside in the parishes of Twyford, Ruscombe and Chazeau.

For more information visit:
www.thelocalgrant.org.uk

Get help if you're struggling with money

Cost of living crisis

We've worked alongside local charities to show all the support you could use for saving money this Winter:

- Pension credits
- Winter Fuel Payments
- Warm spaces open this winter
- Discounts on household bills
- Finding a job
- Healthy food vouchers
- Low income NHS help
- What to do if you can't afford food
- Mental health support
- What to do if you're in debt



SCAN TO GET HELP WITH COST OF LIVING

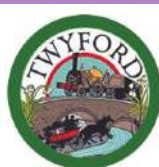
Keep up to date with new support on offer www.wokingham.gov.uk/cost-of-living

Can't get help online?

Call the Citizens Advice Wokingham One Front Door. Open to all residents in Wokingham Borough

0808 278 7958
Open 9am to 5pm, Monday to Friday

citizensadvice.wokingham.org.uk/onefrontdoor



Twyford
PARISH COUNCIL



TWYFORD IN BLOOM ~JULY 2023~

NEW FOR 2023

Chatty Benches

A gift to the village to celebrate 300 years of The Polehampton Charity. Two 'Chatty Benches' where residents can sit and chat together or simply a place to meet new friends have been located at King George V recreation ground and Stanlake Meadow.



Polehampton Charity Trees

Three trees have been planted in Twyford to mark the 300th anniversary of The Polehampton Charity. Two hornbeams, one each at Stanlake Meadow and King George V recreation ground and one Flowering Cherry tree at Wellington Square.

Allotment communal plot

On the 19th June the communal plot, a joint initiative between Twyford Parish Council and Wokingham Borough Council on the Hurst Road allotments was opened to the allotment holders following its completion.

A compost toilet, tables and benches, a shelter, lighting and an electrical & USB point that is operated through the solar panels could be used to boil a kettle or charge battery operated equipment can be found in the area and it is hoped that it will become a hub for the allotment and where allotment holders can socialise.



Twyford
PARISH COUNCIL



TWYFORD IN BLOOM ~JULY 2023~

NEW FOR 2023 CONT...

Bike Service Stations

Working with Wokingham Borough Council's My Journey Wokingham who after successful application for funding from the Department for Environment, Food and Rural Affairs (Defra) have been able to install two deluxe bike repair stands and pumps within Twyford as part of air quality works.

The stations located outside Waitrose & Bia Cycling, have built in tools like screwdrivers, tyre levers, wrenches, and hexagonal keys, and each has a QR code that can be scanned for more information on basic repairs.

Neighbourhood Plan passed at referendum

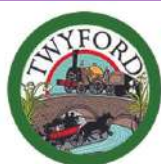
The Neighbourhood Plan successfully passed referendum on 6th July 2023 and will be formally adopted by Wokingham Borough Council in due course.

Coronation Labyrinth

A Twyford in Bloom project supported by Twyford Together was created in April and is hoped to captivate interest as people wind their way through the unique pattern. The labyrinth will develop over the coming seasons and the standing stone centerpiece which is Welsh Sandstone has been sourced from Llangorse Quarry and is guaranteed to be at least 450 million years old.

The labyrinth was created by David Goff Eveleigh, Wales' foremost fire and elemental theatre artist who has a keen interest in labyrinths, their design, symbolism, and ancient roots. One of David's most renowned maze's is the Penpont Green Man Millennium Maze which was commissioned by Gavin and Davina Hogg for their family estate.

Labyrinth's can be traced back over 4000 years and unlike a maze, a labyrinth is a single path that can be used for personal, psychological, and spiritual transformation.



Twyford
PARISH COUNCIL

NEW FOR 2023 IN PICTURES



Are you concerned about the rise in the cost of living?

Twyford and Ruscombe Parish Councils are working together to support and offer guidance to our residents during the cost of living crisis in the UK.

We want to support as many of our residents as possible across the key areas outlined in this leaflet. Please find contact details to below of organisations that can provide advice and support.

WARM PLACES

We are working with Wokingham Borough Council and our local community to create a network of warm spaces. Spaces will be available for people to use and visit during the winter period and beyond.

Warm Spaces are inclusive and non-judgemental, heated and free to access.

The facilities at each Warm Space will vary but will offer opportunities to provide respite and support, to learn new skills. We are working with the local community, so that these spaces will provide hot drinks, internet access, charging points and more importantly a friendly warm environment to connect with others within the community.

Scan to go to our Community Hub

For more information visit:
www.twyford.org.uk
www.ruscombe.org.uk
 Or call: 0118 974 6900

Mental Health Support

There are many things that can affect your mental health, particularly if you are dealing with financial problems or are living alone. It's normal and there is help available.

If you are not alone, don't be afraid to ask for help. You're not alone, you're not a burden.

If you need immediate mental health support call the Samaritans on 116 123
 Or visit www.samaritans.org

Support for those in retirement

Age UK Berkshire

Age UK Berkshire provides essential information and support advice on a wide variety of topics of interest or concern to people aged 50 or older in Berkshire. Age UK Berkshire also assists the families, friends and carers of those aged 50 or over.

For more information visit:
www.ageuk.org.uk/berkshire
 Or call: 0118 9504242

Age Concern Twyford

Age Concern Twyford is a registered charity whose aim is to assist elderly residents in the area to maintain their independence and quality of life. They serve the local villages of Twyford, Hurst, Wargrave, Sonning, Wascote and Chertsey.

For more information visit:
www.ageconcerntwyford.org.uk
 Or call: 0118 9240400

Local Grants for Educational Costs and Hardship

The Rushmore Charity provides relief for people in need, those experiencing hardship or distress and promoting the education of people under 25 who reside in the parishes of Twyford, Ruscombe and Chertsey.

For more information visit:
www.rushmorecharity.org.uk

TWYFORD IN BLOOM ~JULY 2023~





TWYFORD IN BLOOM ~JULY 2023~

LOOKING AHEAD TO 2024

EV charging points

Consideration is being given for providing electric vehicle charging points at Loddon Hall. A decision will be made at the July Full Council meeting.

Developing the labyrinth

The labyrinth will continue to develop over the coming seasons and years and having access to an avid drone enthusiast is enabling us to capture and document the changes.

Options are currently being explored following a request from the Twyford in Bloom Working Group for a form of fencing around the outer edge to provide definition and to safeguard the labyrinth whilst it develops, and thoughts are also being given to ways of enhancing the longer grassed sections.

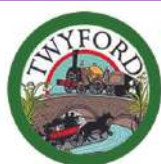
Skate Park renovations

Regular meetings are taking place to develop the project with the project soon going to tender.



Stanlake Pavilion renovations

Regular meetings are taking place to develop the project with the next scheduled for the 19th September for a facilitated workshop as preparation to develop a brief. Twyford Parish Council are working closely with the sports clubs to create a facility that would be of benefit to all Twyford residents.



Twyford
PARISH COUNCIL

TWYFORD IN BLOOM ~JULY 2023~

LOOKING AHEAD TO 2024

Willflower and insect information board

Local children are helping draw insects which will be added to our new Wildflower and Insect information board to be located at King George V recreation ground. The board will be designed and illustrated by our local talented illustrator Rebecca Howard.



**CALLING
ALL
artists**



Twyford
PARISH COUNCIL

We are asking all budding primary school aged artists to help us create a wildflower and insect information board to be located at King George V recreation ground.

The board is being commissioned by Twyford Parish council to highlight the importance of our local insect life and the role of Wildflower meadows.

We would like children to be involved in the making of this artwork. Please check out our website for more information and how you can make your entry:



Wildflower and insect information board.

The project requires an A4 drawing of one of the following insects:

meadow brown butterfly	bumblebee
ladybird	dragonfly
damselflies	ladybird
green lacewing	millipedes
	honey bee



All submissions will be displayed on this special page on the on the Twyford Parsh Council website. Some will be selected to be printed on the information board alongside information about the Wildflower meadow.

Images should be bold and bright and fill the A4 paper. Artists should look at the insects carefully and try to represent them accurately.

Entries should be scanned and sent to clerk@twyfordparishcouncil.gov.uk by 7th July 2023.



Twyford
PARISH COUNCIL



TWYFORD IN BLOOM ~JULY 2023~

WORKING TOGETHER



Twyford
PARISH COUNCIL

**TWYFORD PARISH COUNCIL EVENTS,
VOLUNTEER GROUPS & TWYFORD IN
BLOOM MEETINGS**



**Twyford
Together**

TWYFORD TOGETHER EVENTS



TRHA NEWSLETTERS AND TRIPS

TWINNING

SOCIAL MEDIA AND SIGNPOSTING



SOCIAL MEDIA AND SIGNPOSTING



**TWYFORD IN BLOOM
FOLLOW US ON INSTAGRAM**



Twyford
PARISH COUNCIL



TWYFORD IN BLOOM

~JULY 2023~

COMMUNITY ENGAGEMENT

THANK YOU TO THOSE THAT DECORATED WHEELBARROWS FOR OUR 2023 TOUR:

**GRAPEVINE
MILES & DAUGHTER
PARKERS
TWYFORD COMETS
TWYFORD TENNIS CLUB
TWYFORD GROWERS
TWYFORD & RUSCOMBE HORTICULTURAL ASSOCIATION
TWYFORD ALLOTMENTS TENANTS ASSOCIATION
BRIDGE HOUSE
DOBBIES GARDEN CENTRE
TWYFORD & RUSCOMBE HISTORY SOCIETY
THE COLLETON SCHOOL
RURAL PIE
TWYFORD & RUSCOMBE THEATRE GROUP
POLEHAMPTON SCHOOL
THE HISTORY SOCIETY
LODDON HALL
TWYFORD TWINNING ASSOCIATION**



Twyford
PARISH COUNCIL

TWYFORD IN BLOOM

~JULY 2023~

THANK YOU TO THOSE THAT SUPPORTED OUR 2023 TOUR:

JUDGES:

WAYNE PALMER AND STEVE CATANACH

REPRESENTATIVES FROM TWYFORD:

GEMMA ALFORD - WILDFLOWER AREAS

HAZEL EVANS, TWINNING ASSOCIATION CHAIR

CLLR BRIDGET DITCHAM - TWYFORD PARISH COUNCIL

CLLR MALCOLM BRAY - TWYFORD PARISH COUNCIL

DAVID BRIGHT - TWYFORD ALLOTMENTS TENANTS ASSOCIATION REPRESENTATIVE

EMMA DONALD - CORONATION LABYRINTH

STEPHEN LOYD - ENVIRONMENTALIST

JENNY BENDER, STORE MANAGER - TWYFORD & RUSCOMBE HORTICULTURAL ASSOCIATION

MYRDDIN JONES, TRHA CHAIR - TWYFORD & RUSCOMBE HORTICULTURAL ASSOCIATION

GRAHAM STARKIE - TWYFORD & RUSCOMBE HISTORY SOCIETY

GERRY WISE - ADOPT-A-STREET ORGANISER

REBECCA HOWARD - POLEHAMPTON SECRET GARDEN & STANLAKE TREES

SUE PARKER - TWYFORD GROWERS

PAUL CASSIDY - TWYFORD TOGETHER

CLLR HELEN WINDER - TWYFORD PARISH COUNCIL & DOBBIES GARDEN CENTRE

LUCY MOFFATT - CLERK TO TWYFORD PARISH COUNCIL

LYNN POVEY - DEPUTY CLERK TO TWYFORD PARISH COUNCIL



Twyford
PARISH COUNCIL